



Insulated Garden Room POOLHOUSE 4m x 3m (13x10 ft) Twin Skin

Product # AV599

£4,339.00

£5,049.00 / You save £710.00

The price includes:

Double glazing, pressure treated floor bearers, flooring, storm braces, Insulation kit, delivery, offloading, hardware kit & VAT.

Visit our website to make sure this is the current price:

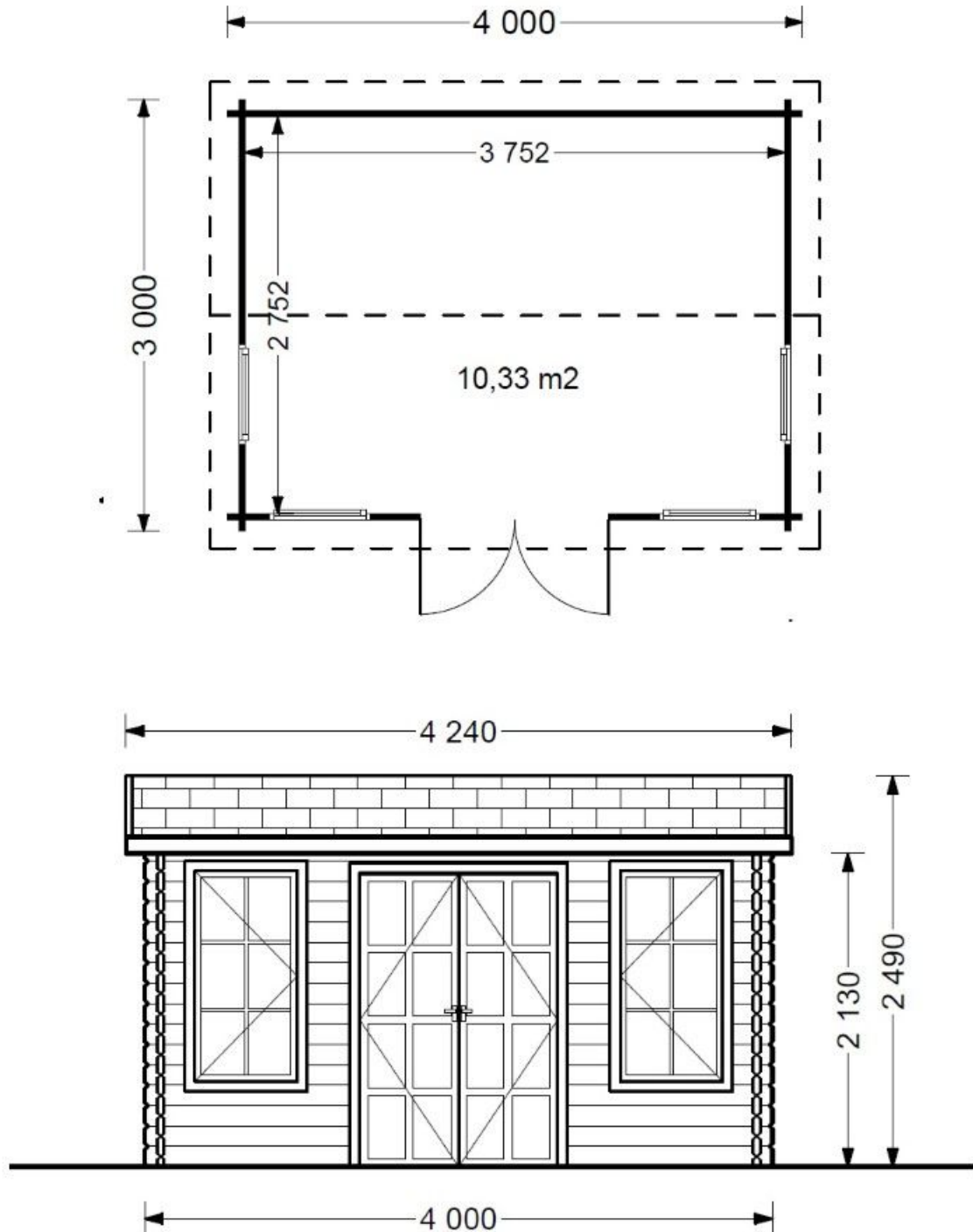
www.quick-garden.co.uk/av599/

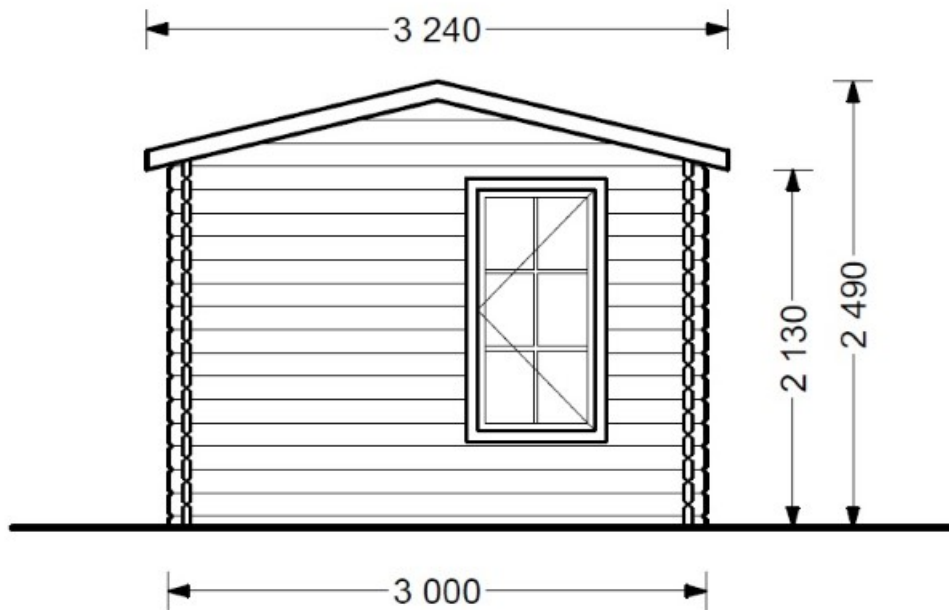
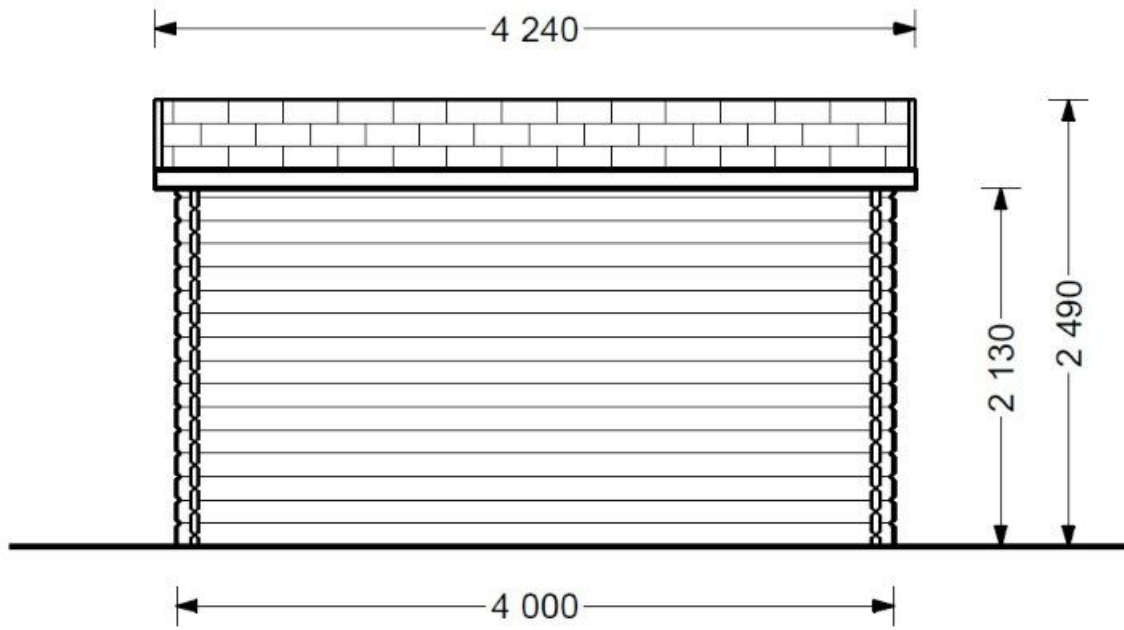


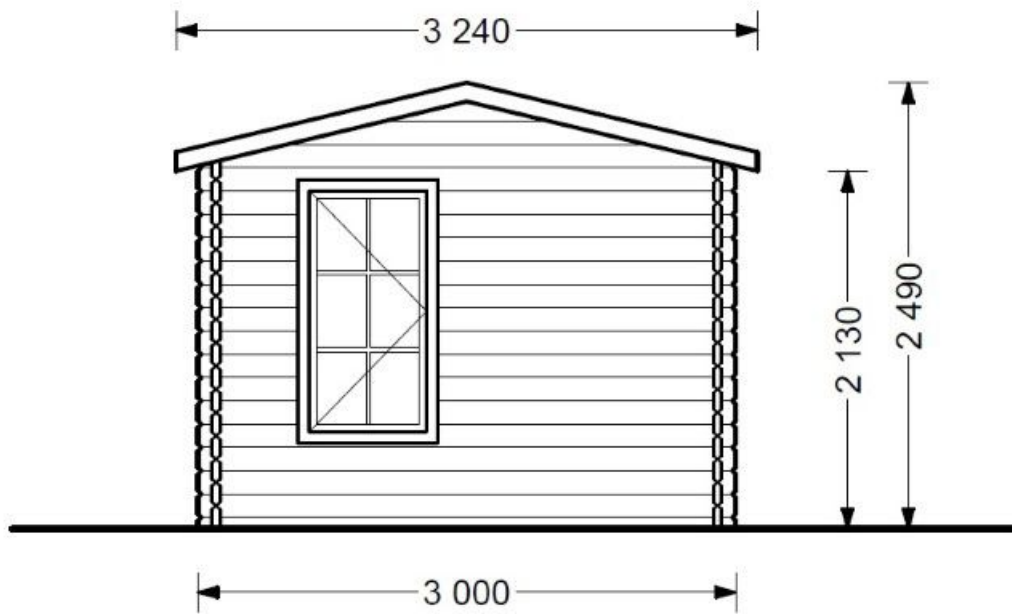
Finance available. Contact us!

Call us **02070 994 301** Mon-Fri: 8am-5pm
clients@quick-garden.co.uk • www.quick-garden.co.uk

Specifications & detailed sketches







Product specifications

Material	Slow grown spruce
External dimensions (width x depth)	400cm x 300cm (13'1" x 9'10")
Wall	44 mm + 50 mm insulation + 44 mm
Eaves height	213cm (6'11")
Ridge height	249cm (8'2")
Roof Material	20 mm tongue & groove boards + 25 mm insulation
Floor Material	20 mm tongue & groove boards + 25 mm insulation
Roof area	15 m ²
Roof overhang	10 cm
Number of rooms	1
Door (width x height)	131cm x 192cm (1 unit)
Windows (width x height)	70cm x 144cm (4 units)
Glazing	Double-glazed
Roof Covering Material	Optional
Anti Rot Warranty	10 Year
Minimum base required	384cm x 284cm

Select product features according to your needs

Timber frame base (£720.00 payable on completion)	Available with installation service only	+£0.00
Bitumen roofing shingles:	Green Shingles	+£280.00
	Red Shingles	+£280.00
	Black Shingles	+£280.00
Metal roofing	Black	+£549.00
	Green	+£549.00
	Red	+£549.00
PVC guttering (£189.00 payable on completion)	Available with installation service only	+£0.00

Installation service (£1429 payable on completion)	Payable on completion	+£0.00
Turn-Key package deal (contact us for a quote)	A complete Turn-Key package deal (Prices on request)	+£0.00
Wooden canopy 3m x 1.5m	3m x 1.5m	From +£189.00
Storage shed 2.7m x 1.6m (28mm)	2.7m x 1.6m (28mm)	From +£489.00
Clear water-based primer for interior RP Wood® (supplied RP Wood® clear in tins)	treatment	+£169.00
Woodshed 2.2m x 1.44m (28mm)	2.2m x 1.44m (28mm)	From +£439.00
Wooden Terrace 4m x 1.5m	4m x 1.5m	+£259.00

Customer Service

Free delivery *

Mainland England and Wales

4 - 8 working days for products in stock

4 - 8 weeks for products not in stock or custom-made products

Mainland Scotland

8 - 15 working days for products in stock

4 - 8 weeks for products not in stock or custom-made products

* An extra charge for deliveries to mainland Scotland applies only for items which are priced under £3000. In such cases you will find these charges on each product page. For all items whose price is over £3000, delivery to mainland Scotland is free of charge.

Payment

We accept card and bank payments.

To submit your order, you can either choose to pay a deposit of 20% of the total price or to pay the whole price in one go.

Planning permission

Contact us for any advice you may need regarding basic planning permission or building regulation matters. We will always be happy to help you.

10 yrs. warranty

All garden buildings with a wall thickness of at least 34mm come with a 10-year anti-rot guarantee. Structures with 28mm wall thickness come with a corresponding 5-year anti-rot guarantee.