



## Garden shed Zeta 1.8m x 2.3m (6' x 7'6")

Product # AV39-4

- Better resistance to rot & mould
- Reinforced roof construction
- Reliable floor bearers
- Hardware kit included
- Direct from the factory
- Polite & Convenient delivery
- Made while protecting the forests

**£569.00**

~~£620.00~~ / You save £51.00

**The price includes:**

The price includes: delivery,  
hardware kit & VAT.

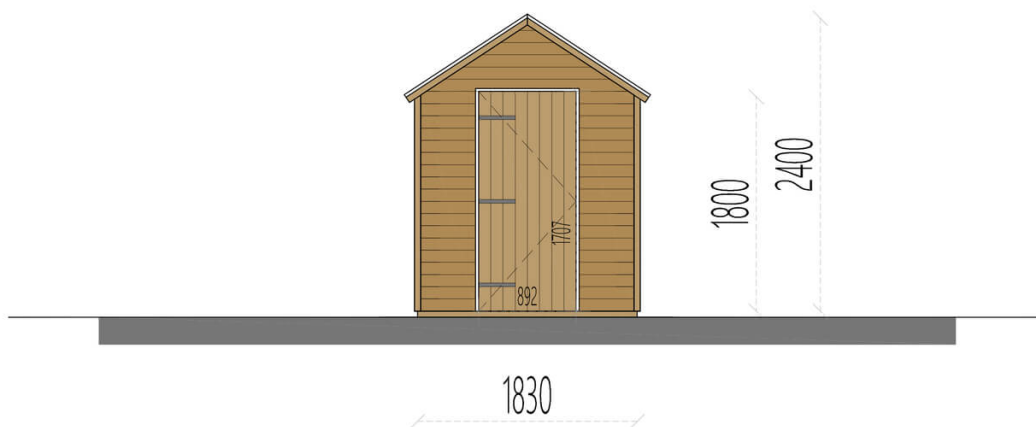
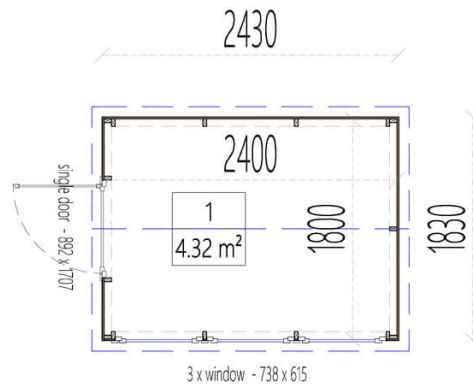
*Visit our website to make sure this  
is the current price:*

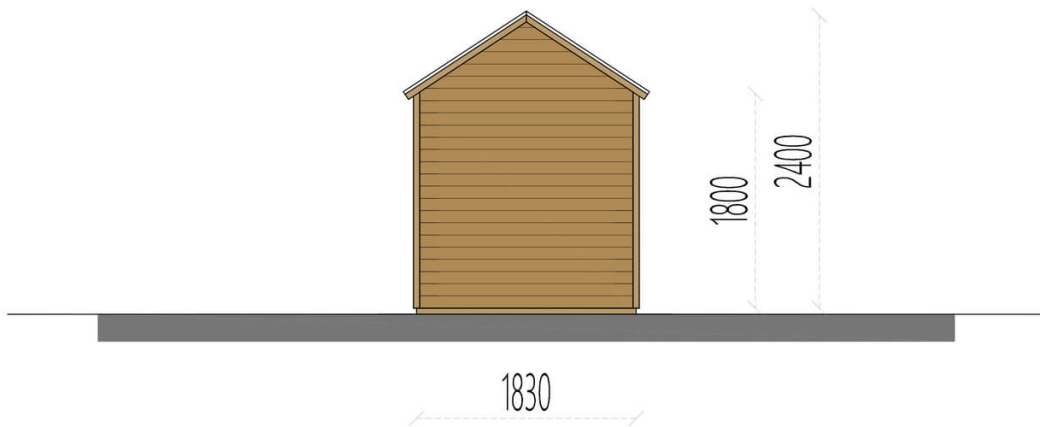
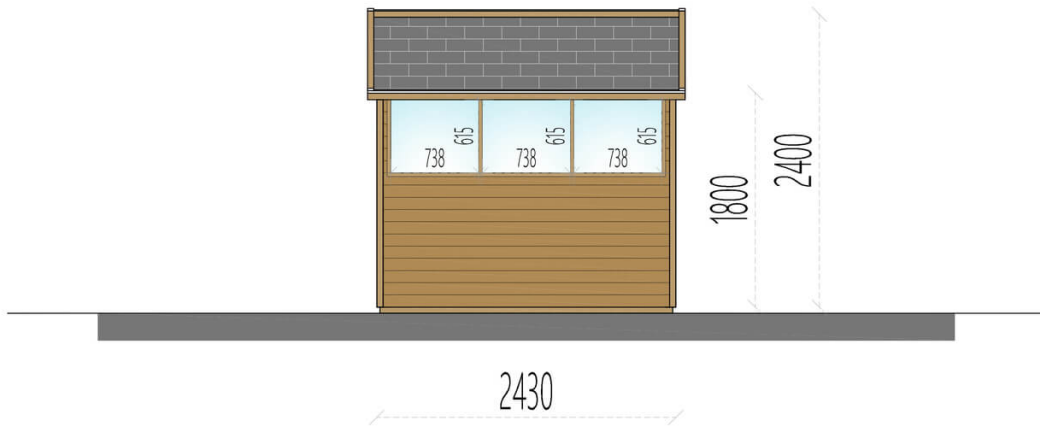
[www.quick-garden.co.uk/av39-4/](http://www.quick-garden.co.uk/av39-4/)

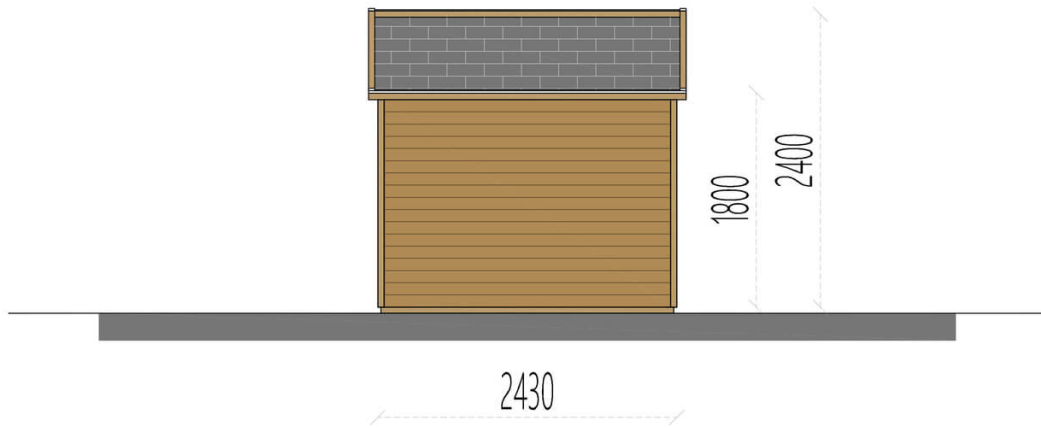


**Finance available. Contact us!**

## Specifications & detailed sketches







## Product specifications

Material	Natural certified Nordic pine/ Scandinavian spruce
External dimensions (width x depth)	230cm x 180cm (7ft. 6in. x 5ft. 10in.)
Wall	14mm panels
Ridge height	240cm (7ft. 10in.)
Roof Material	19 - 20mm thick tongue & groove boards
Glazing	Plexiglass

## Select product features according to your needs

Delivery	Self Offloading	+£0.00
	Offloading included (no assistance required)	+£96.00
Flooring	20mm Tongue and Groove boards	+£79.00
Roof covering material :	Bitumen felt (Black)	+£49.00
Clear water-based primer for interior RP Wood® (supplied RP Wood® clear in tins)	treatment	+£109.00
Installation service (£550 payable on completion)	Payable on completion	+£0.00
Adjustable PVC pedestals for uneven base	PVC Pedestals	+£199.00

## Customer Service

### Free delivery \*

Mainland England and Wales

4 - 8 working days for products in stock

4 - 8 weeks for products not in stock or custom-made products

Mainland Scotland

8 - 15 working days for products in stock

4 - 8 weeks for products not in stock or custom-made products

\* An extra charge for deliveries to mainland Scotland applies only for items which are priced under £3000. In such cases you will find these charges on each product page. For all items whose price is over £3000, delivery to mainland Scotland is free of charge.

---

### Payment

We accept card and bank payments.

To submit your order, you can either choose to pay a deposit of 20% of the total price or to pay the whole price in one go.

---

### Planning permission

Contact us for any advice you may need regarding basic planning permission or building regulation matters. We will always be happy to help you.

---

### 10 yrs. warranty

All garden buildings with a wall thickness of at least 34mm come with a 10-year anti-rot guarantee. Structures with 28mm wall thickness come with a corresponding 5-year anti-rot guarantee.