



Log cabin OAK 6m x 3m (20' x 10') 44mm

Product # AV137A

- Better resistance to rot & mould
- Reinforced roof construction
- Premium windows & doors
- Secure locks & hinges
- Window and door seals included
- Storm braces included
- Interchange the opposite walls!
- Moisture resistant door and windows
- Tongue & Groove floorboards included
- Reliable floor bearers
- Hardware kit included
- Pure glass - no cheap plastic
- Direct from the factory
- Polite & Convenient delivery
- Made while protecting the forests

£3,349.00

~~£3,699.00~~ / You save £350.00

The price includes:

double glazing, flooring, delivery, offloading, hardware kit & VAT.

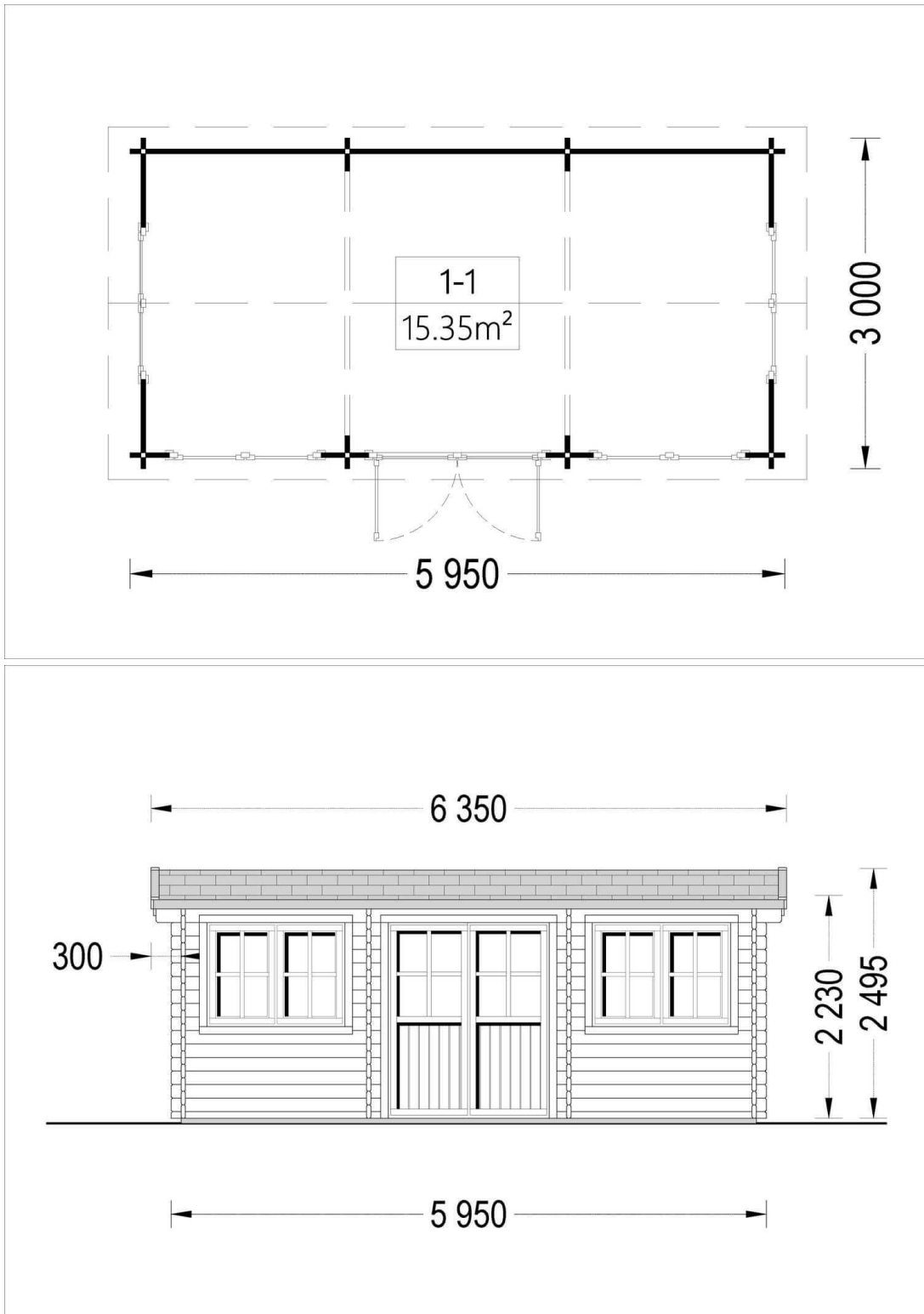
Visit our website to make sure this is the current price:

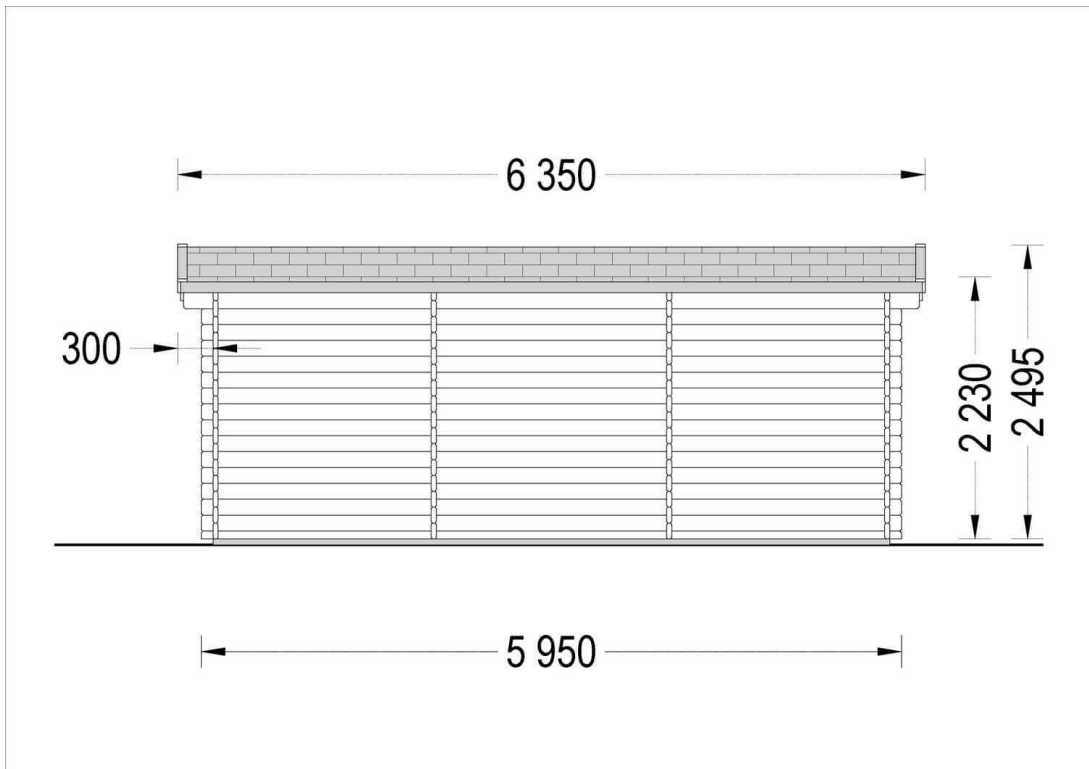
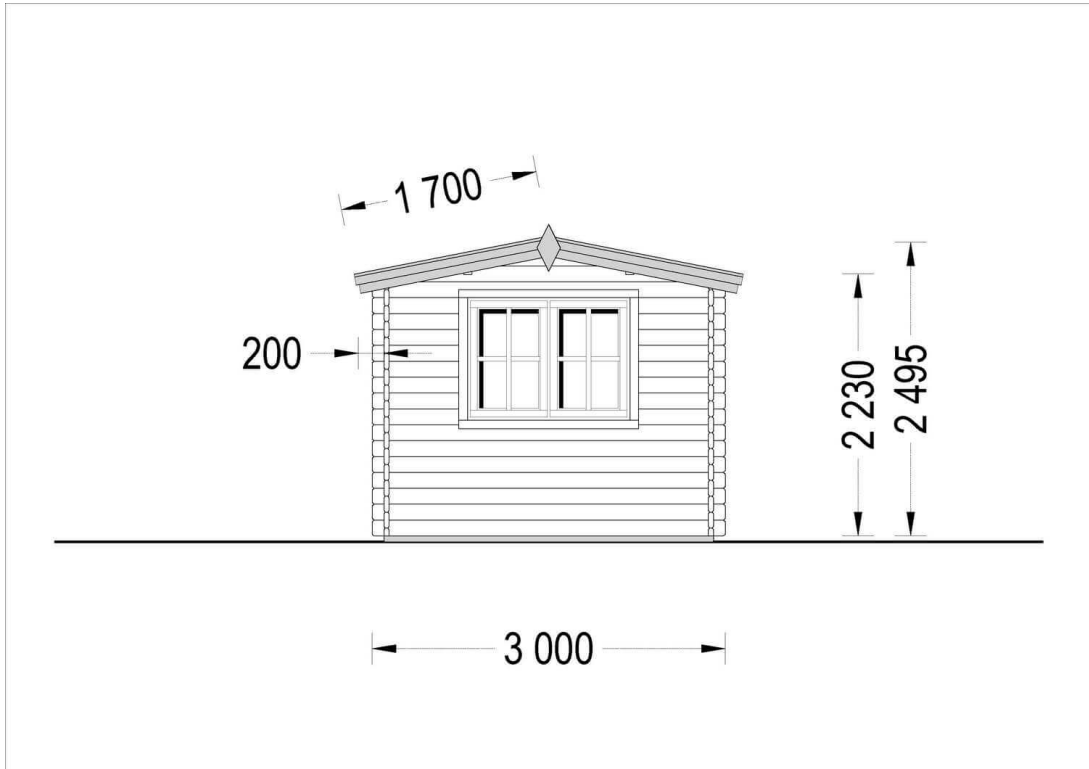
www.quick-garden.co.uk/av137a/

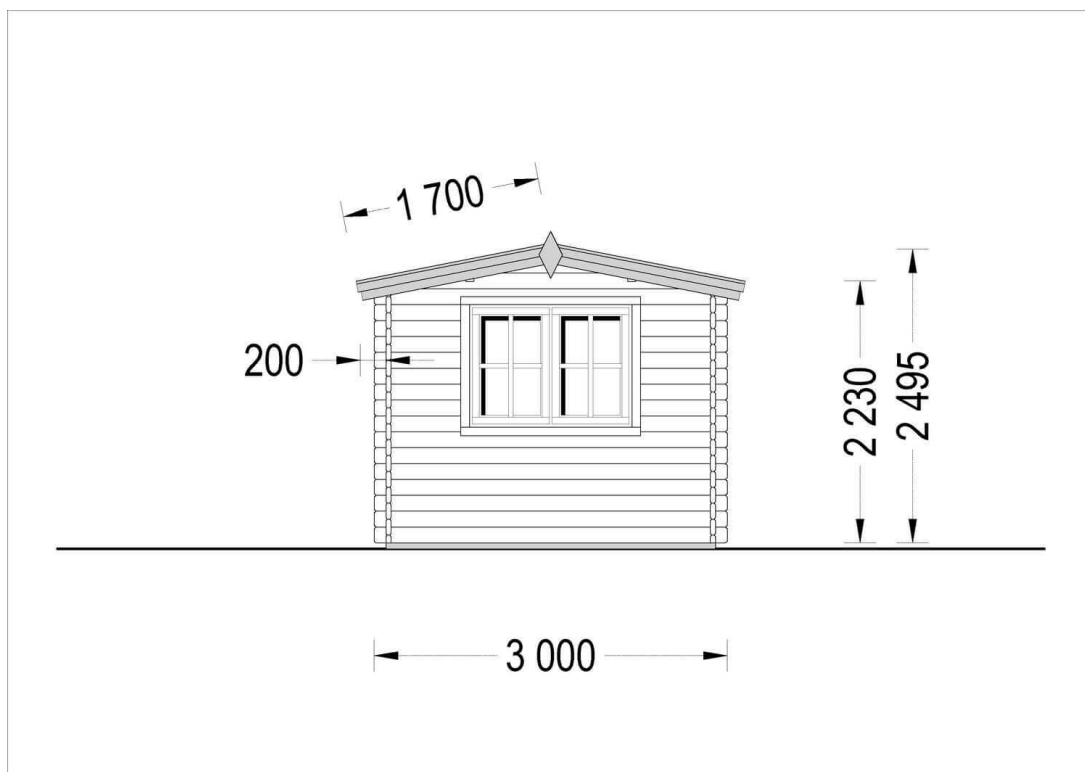


Finance available. Contact us!

Specifications & detailed sketches







Product specifications

| | |
|-------------------------------------|--|
| Material | Natural certified Nordic pine/ Scandinavian spruce |
| External dimensions (width x depth) | 595cm x 300cm (19'8" x 9'10") |
| Internal dimensions (width x depth) | 565cm x 270cm (18'8" x 12'2") |
| Wall | 44mm |
| Eaves height | 223cm (6'11") |
| Ridge height | 249cm (8'2") |
| Roof Material | 19 - 20mm thick tongue & groove boards |
| Floor Material | 19 - 20mm thick tongue & groove boards |
| Roof area | 21.5 m ² |
| Roof overhang | 20cm (7") |
| Number of rooms | 1 |
| Door (width x height) | 161cm x 192cm (1 unit) |
| Windows (width x height) | 138cm x 101cm (4 units) |
| Glazing | Double-Glazed |
| Roof Covering Material | Optional |
| Anti Rot Warranty | 10 Year |
| Minimum base required | 584cm x 284cm |

Select product features according to your needs

| | | |
|--|--|----------|
| Timber frame base (£1080.00 payable on completion) | Available with installation service only | +£0.00 |
| Bitumen roofing shingles: | Green Shingles | +£385.00 |
| | Red Shingles | +£385.00 |
| | Black Shingles | +£385.00 |
| Metal roofing | Black | +£759.00 |
| | Green | +£759.00 |
| | Red | +£759.00 |
| PVC guttering (£289.00 payable on completion) | Available with installation | +£0.00 |

Call us **02070 994 301** Mon-Fri: 8am-5pm
clients@quick-garden.co.uk • www.quick-garden.co.uk

| | service only | |
|--|--|---------------|
| Wall thickness | 44mm | +£0.00 |
| | 66mm | +£920.00 |
| Turn-Key package deal (contact us for a quote) | A complete Turn-Key package deal (Prices on request) | +£0.00 |
| Installation service (£859.00 payable on completion) | Payable on completion | +£0.00 |
| Roof & Floor insulation | with a 25mm insulation kit | +£329.00 |
| Woodshed 2.2m x 1.44m (28mm) | 2.2m x 1.44m (28mm) | From +£439.00 |
| Clear water-based primer for interior RP Wood® (supplied RP Wood® clear in tins) | treatment | +£139.00 |
| Wooden canopy 3m x 1.5m | 3m x 1.5m | From +£189.00 |
| Storage shed 2.7m x 1.6m (28mm) | 2.7m x 1.6m (28mm) | From +£489.00 |

Customer Service

Free delivery *

Mainland England and Wales

4 - 8 working days for products in stock

4 - 8 weeks for products not in stock or custom-made products

Mainland Scotland

8 - 15 working days for products in stock

4 - 8 weeks for products not in stock or custom-made products

* An extra charge for deliveries to mainland Scotland applies only for items which are priced under £3000. In such cases you will find these charges on each product page. For all items whose price is over £3000, delivery to mainland Scotland is free of charge.

Payment

We accept card and bank payments.

To submit your order, you can either choose to pay a deposit of 20% of the total price or to pay the whole price in one go.

Planning permission

Contact us for any advice you may need regarding basic planning permission or building regulation matters. We will always be happy to help you.

10 yrs. warranty

All garden buildings with a wall thickness of at least 34mm come with a 10-year anti-rot guarantee. Structures with 28mm wall thickness come with a corresponding 5-year anti-rot guarantee.