



Summer House AIDA PLUS 5m x 3m (17x10 ft) 28 mm

Product # AV054

- Better resistance to rot & mould
- Reinforced roof construction
- Premium windows & doors
- Secure locks & hinges
- Window and door seals included
- Storm braces included
- Moisture resistant door and windows
- Tongue & Groove floorboards included
- Reliable floor bearers
- Hardware kit included
- Pure glass - no cheap plastic
- Direct from the factory
- Polite & Convenient delivery
- Made while protecting the forests

£2,579.00

The price includes:

flooring, pressure treated floor bearers, storm braces, delivery, offloading, hardware kit & VAT.

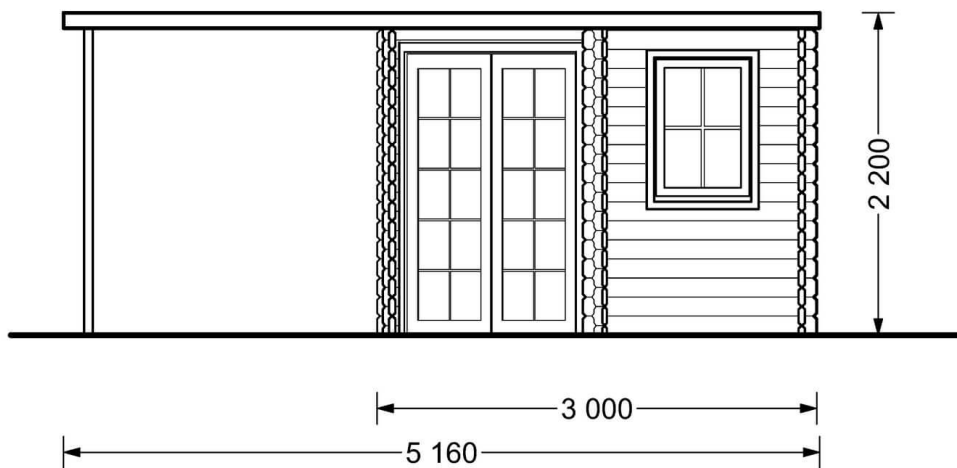
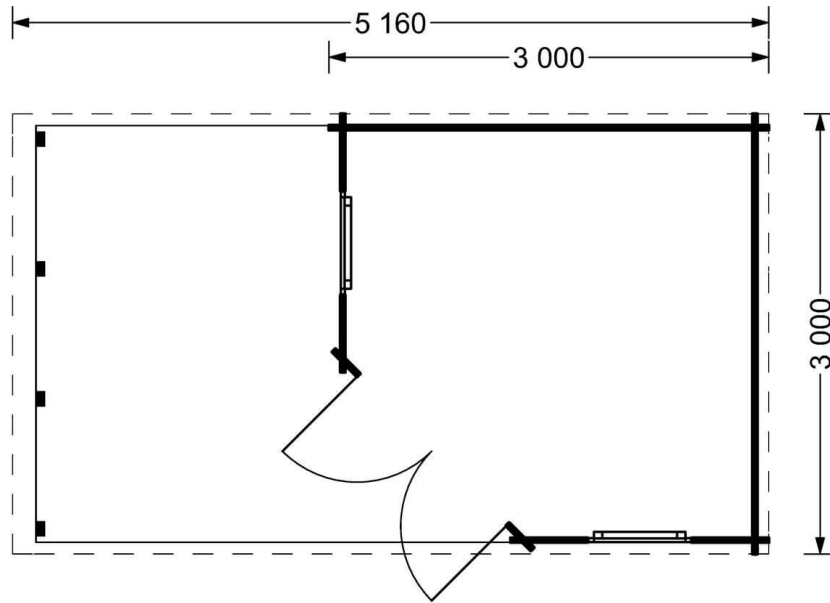
Visit our website to make sure this is the current price:

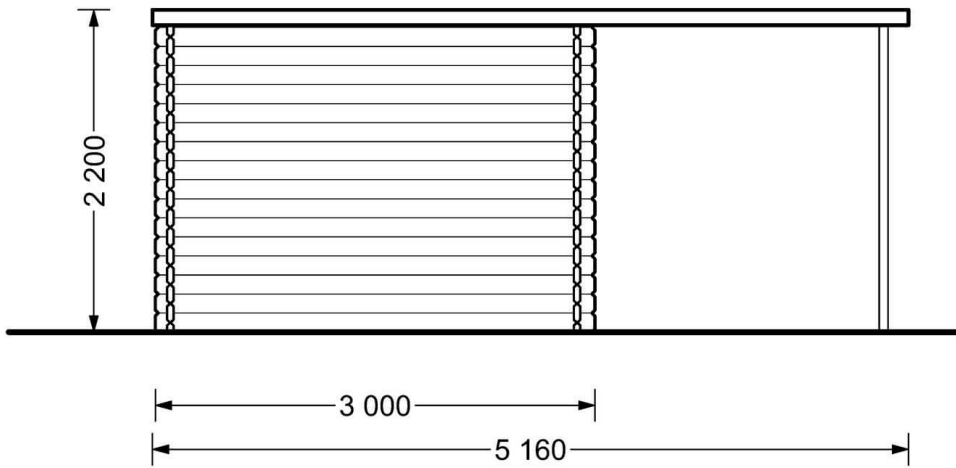
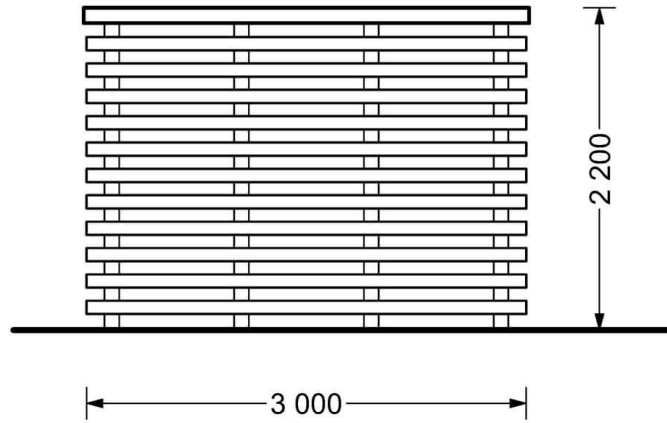
www.quick-garden.co.uk/av054/

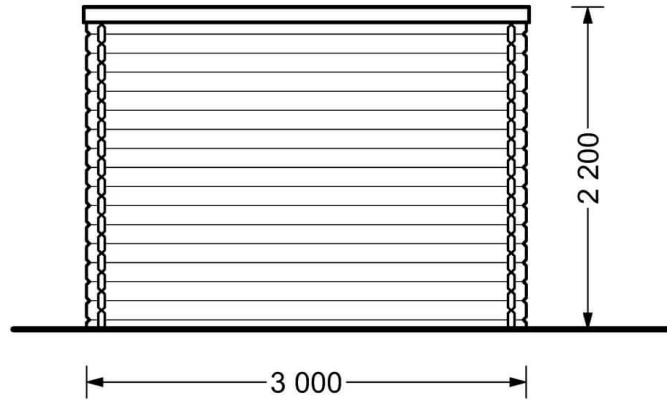


Finance available. Contact us!

Specifications & detailed sketches







Product specifications

Material	Slow grown spruce
External dimensions (width x depth)	500cm x 300cm (16'4" x 9'10")
Internal dimensions (width x depth)	280cm x 280cm +200cm (9'2" x 9'2" + 6'6")
Wall	28 mm
Eaves height	210cm (6'10")
Ridge height	220cm (7'2")
Roof Material	19 - 20mm thick tongue & groove boards
Floor Material	19 - 20mm thick tongue & groove boards
Roof area	20m ²
Roof overhang	20cm (7")
Number of rooms	1
Door (width x height)	130cm x 192cm (Double door)
Windows (width x height)	70cm x 144cm (2 units)
Glazing	Single-glazed (4mm glass)
Roof Covering Material	Optional
Anti Rot Warranty	10 Year
Minimum base required	284cm x 484cm

Select product features according to your needs

Steel gutter system Budmat Flamingo	Anthracite Grey	+£201.00
	Anthracite Grey + Installation	+£401.00
	Timber frame base (£900.00 payable on completion)	Available with installation service only
TIKKURILA Ultra Classic paints	Brown	+£260.00
	Yellow	+£260.00
	White	+£260.00
Roof Covering Material	Firestone ®EPDM	+£409.00

Call us **02070 994 301** Mon-Fri: 8am-5pm
clients@quick-garden.co.uk • www.quick-garden.co.uk

	Premium Felt	+£299.00
Installation service (£969.00 payable on completion)	Payable on completion	+£0.00
Clear water-based primer for interior RP Wood® (supplied RP Wood® clear in tins)	treatment	+£139.00
Woodshed 2.2 m x 1.44 m (28 mm)	2.2m x 1.44m (28mm)	From +£439.00
Storage shed 2.7m x 1.6m (28mm)	2.7m x 1.6m (28mm)	From +£489.00
Wooden flowerbox	under the window	+£29.00
25mm Roof & Floor insulation	25mm Roof & Floor insulation	+£329.00

Customer Service

Free delivery *

Mainland England and Wales

4 - 8 working days for products in stock

4 - 8 weeks for products not in stock or custom-made products

Mainland Scotland

8 - 15 working days for products in stock

4 - 8 weeks for products not in stock or custom-made products

* An extra charge for deliveries to mainland Scotland applies only for items which are priced under £3000. In such cases you will find these charges on each product page. For all items whose price is over £3000, delivery to mainland Scotland is free of charge.

Payment

We accept card and bank payments.

To submit your order, you can either choose to pay a deposit of 20% of the total price or to pay the whole price in one go.

Planning permission

Contact us for any advice you may need regarding basic planning permission or building regulation matters. We will always be happy to help you.

10 yrs. warranty

All garden buildings with a wall thickness of at least 34mm come with a 10-year anti-rot guarantee. Structures with 28mm wall thickness come with a corresponding 5-year anti-rot guarantee.