



Insulated cabin FILL 11m x 6m (35' x 20') BRF*

Product # AV064-3

£29,390.00

~~£34,390.00~~ / You save £5,000.00

The price includes:

double glazing, flooring, delivery,
offloading, hardware kit & VAT.

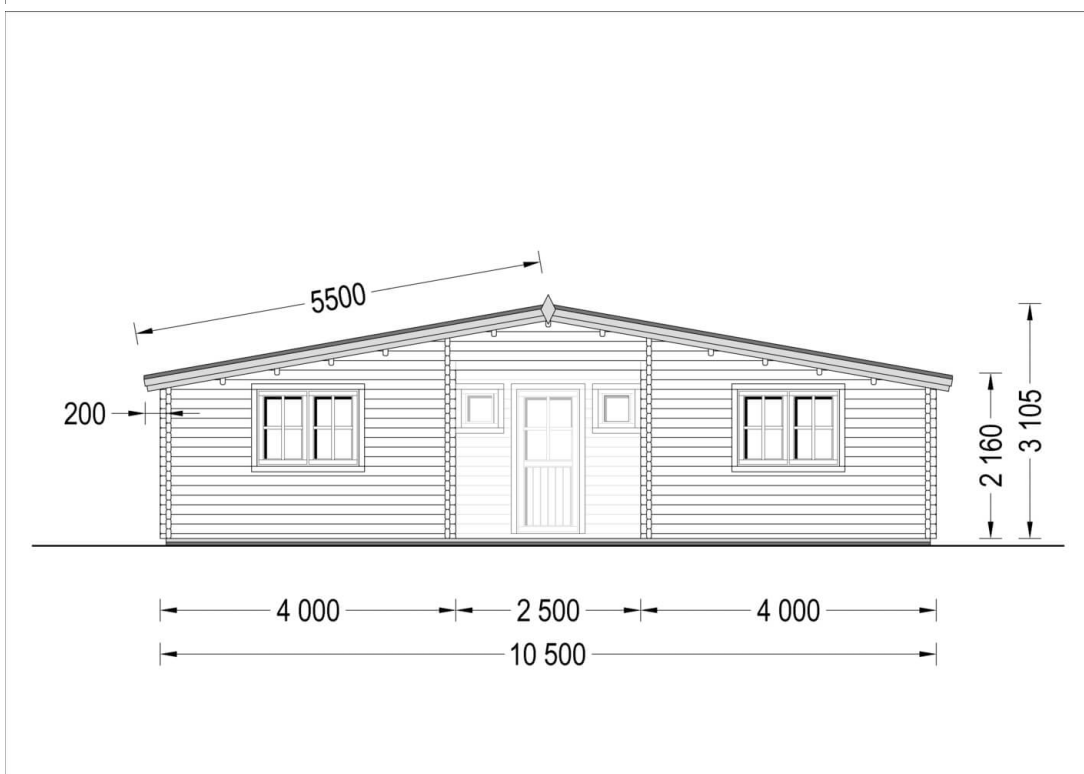
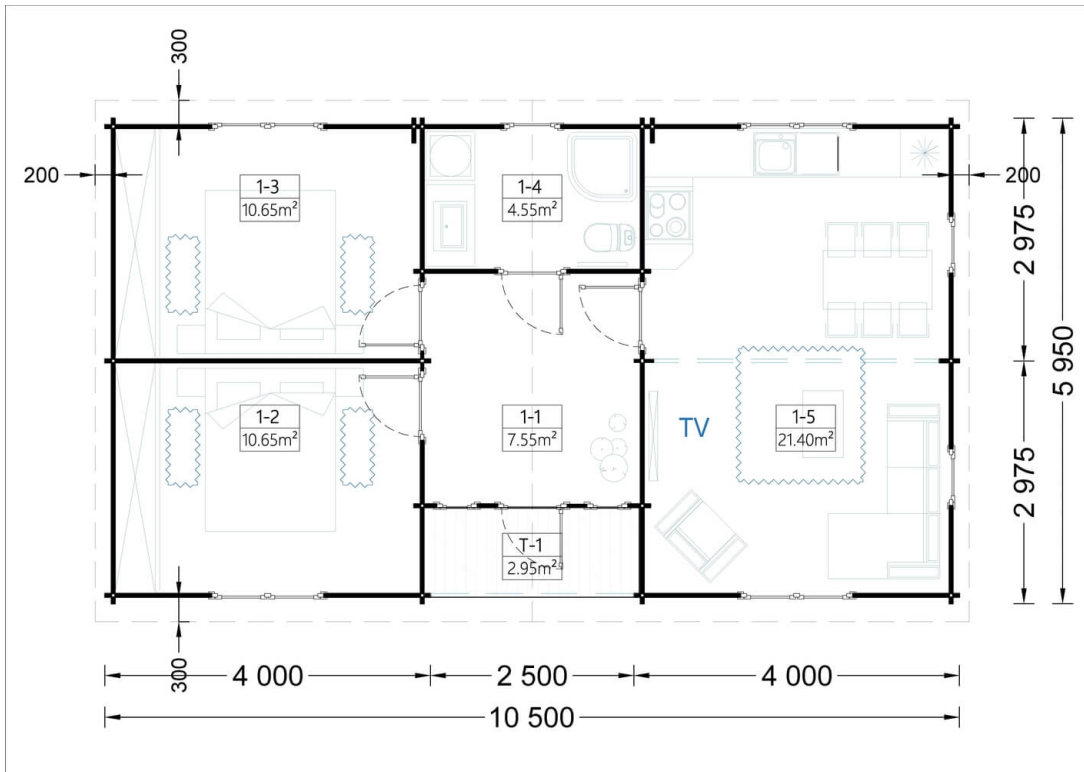
*Visit our website to make sure this
is the current price:*

www.quick-garden.co.uk/av064-3/

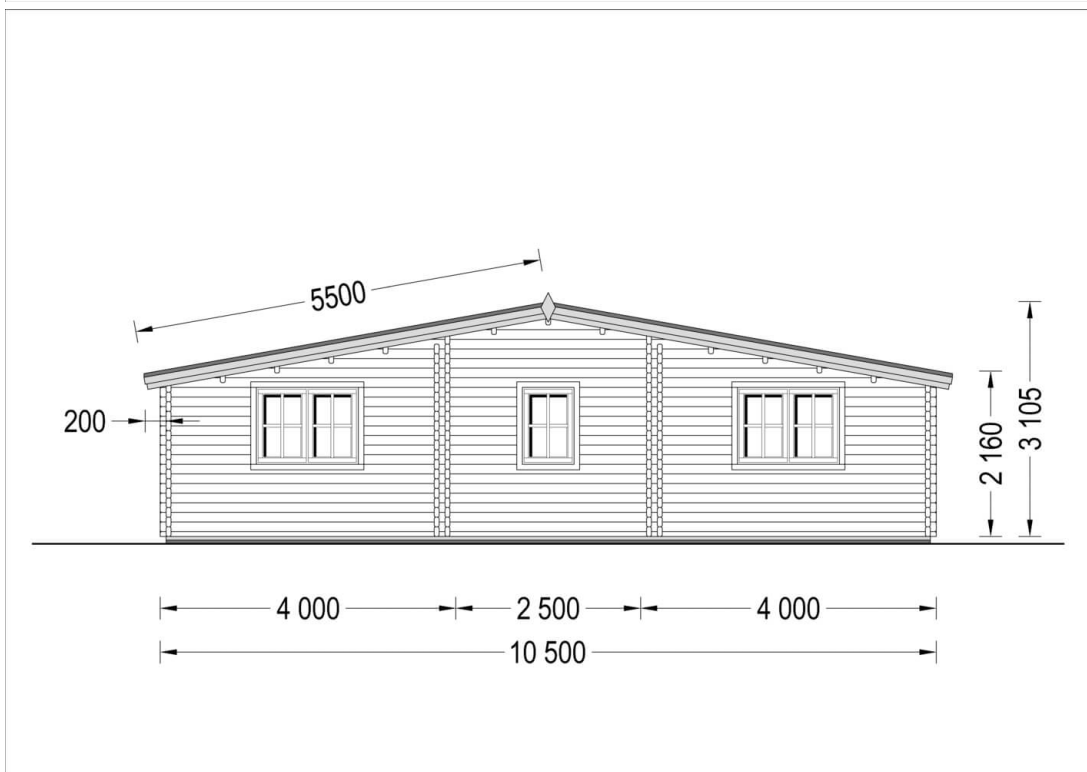
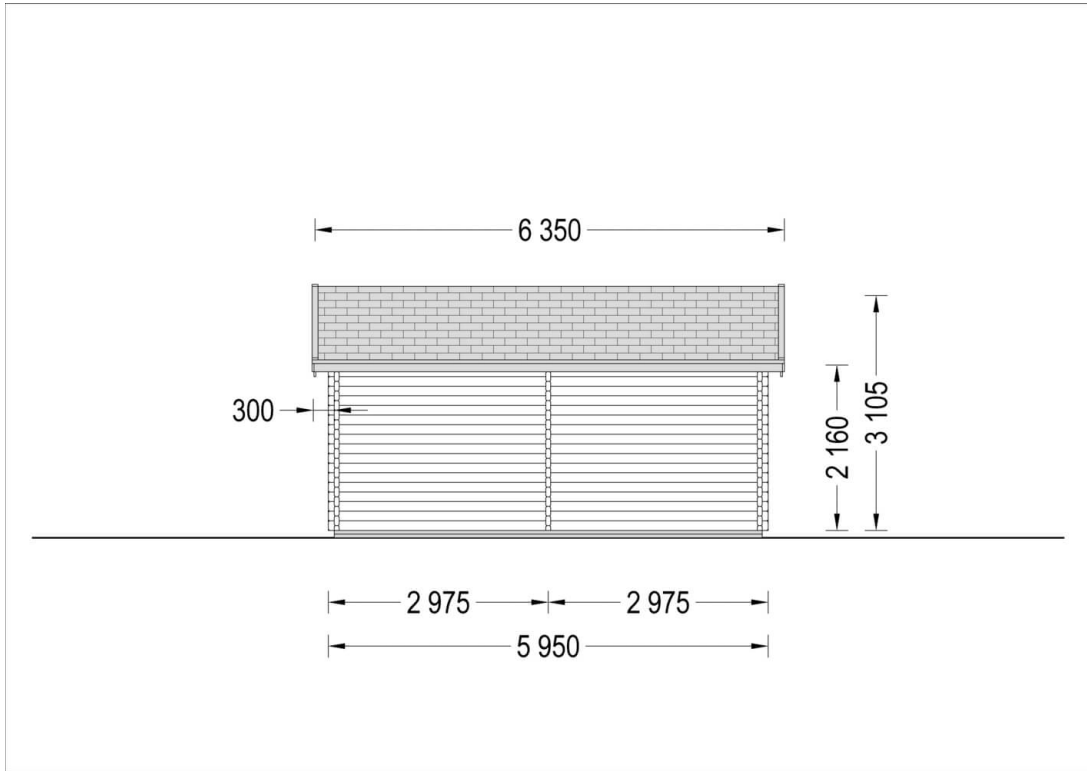


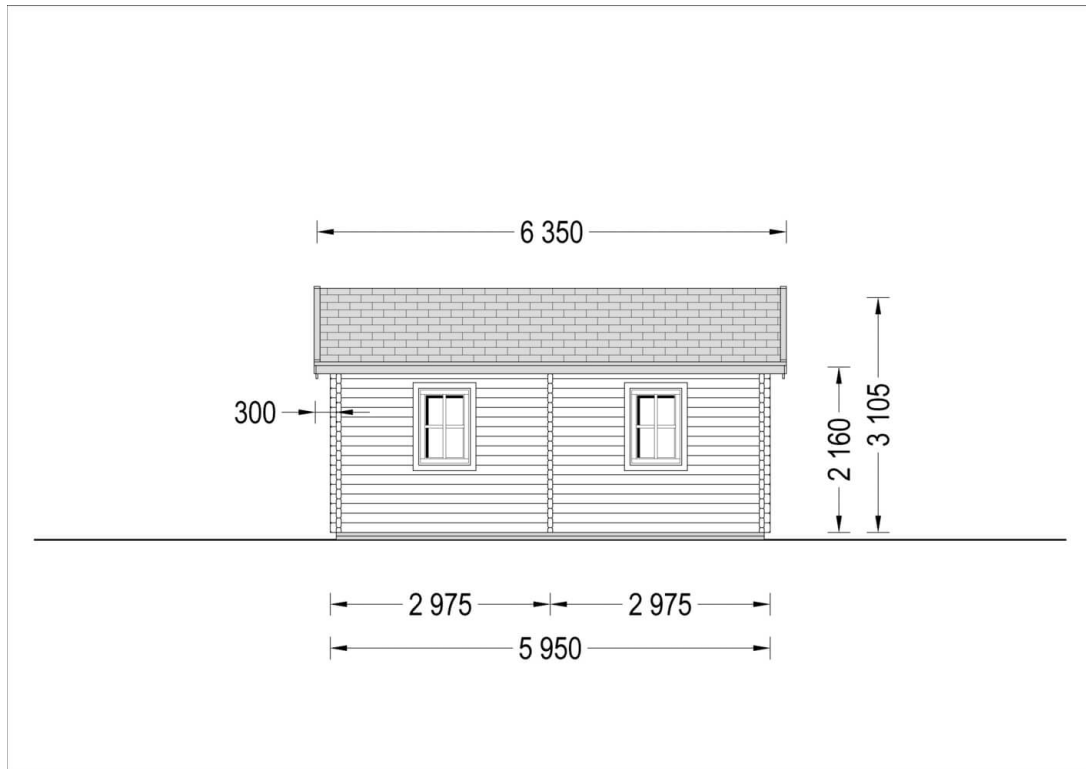
Finance available. Contact us!

Specifications & detailed sketches



Call us **02070 994 301** Mon-Fri: 8am-5pm
clients@quick-garden.co.uk • www.quick-garden.co.uk





Product specifications

| | |
|-------------------------------------|--|
| Material | Natural certified Nordic pine/ Scandinavian spruce |
| External dimensions (width x depth) | 1050cm x 595cm (34'5" x 19'6") |
| Internal dimensions (width x depth) | 1023cm x 568cm (33'6" x 18'7") |
| Wall | 44mm + 120mm polyurethane insulation & diffusion membrane + 44mm |
| Eaves height | 216cm (7'1") |
| Ridge height | 310,5cm (10'2") |
| Roof Material | 20mm Tongue and Groove roof boards + 9mm roof construction + 175mm insulation & diffusion membrane |
| Floor Material | 200mm floor insulation & diffusion membrane under the 20mm floorboards |
| Roof area | 70m ² |
| Roof overhang | 30cm (11") |
| Number of rooms | 4 |
| Door (width x height) | 85cm x 187cm (4 units; internal) and Windex PVC 85cm x 187cm (1 unit; external) |
| Windows (width x height) | WinkHaus PVC windows: 138cm x 101cm (4 units), 70cm x 101cm (3 units) and 50cm x 50cm (2 units) |
| Glazing | Double-Glazed |
| Roof Covering Material | Optional |
| Anti Rot Warranty | 10 Year |
| Minimum base required | 1037cm x 584cm |

Select product features according to your needs

| | | |
|--|--|------------|
| Timber frame base (£3500.00 payable on completion) | Available with installation service only | +£0.00 |
| Wall thickness: | 44mm | +£0.00 |
| | 66mm | +£2,119.00 |

Call us **02070 994 301** Mon-Fri: 8am-5pm
clients@quick-garden.co.uk • www.quick-garden.co.uk

| | | |
|---|--|---------------|
| Bitumen roofing shingles: | Green Shingles | +£840.00 |
| | Red Shingles | +£840.00 |
| | Black Shingles | +£840.00 |
| Metal roofing | Black | +£2,099.00 |
| | Green | +£2,099.00 |
| | Red | +£2,099.00 |
| PVC guttering (£289.00 payable on completion) | Available with installation service only | +£0.00 |
| Installation service (£8649.00 payable on completion) | Payable on completion | +£0.00 |
| Turn-Key package deal (contact us for a quote) | A complete Turn-Key package deal (Prices on request) | +£0.00 |
| Storage shed 2.7m x 1.6m (28mm) | 2.7m x 1.6m (28mm) | From +£489.00 |
| RoofLITE® Roof window 55cm x 78cm | 55cm x 78cm | From +£219.00 |
| Clear water-based primer for interior RP Wood® (supplied in tins) | RP Wood® clear treatment | +£259.00 |

Customer Service

Free delivery *

Mainland England and Wales

4 - 8 working days for products in stock

4 - 8 weeks for products not in stock or custom-made products

Mainland Scotland

8 - 15 working days for products in stock

4 - 8 weeks for products not in stock or custom-made products

* An extra charge for deliveries to mainland Scotland applies only for items which are priced under £3000. In such cases you will find these charges on each product page. For all items whose price is over £3000, delivery to mainland Scotland is free of charge.

Payment

We accept card and bank payments.

To submit your order, you can either choose to pay a deposit of 20% of the total price or to pay the whole price in one go.

Planning permission

Contact us for any advice you may need regarding basic planning permission or building regulation matters. We will always be happy to help you.

10 yrs. warranty

All garden buildings with a wall thickness of at least 34mm come with a 10-year anti-rot guarantee. Structures with 28mm wall thickness come with a corresponding 5-year anti-rot guarantee.