

## Carport + shed 5m x 6m (17' x 20') 44mm

Product # AV038-8

- Heavy duty garage door
- Better resistance to rot & mould
- Reinforced roof construction
- Premium windows & doors
- Window and door seals included
- Storm braces included
- Secure locks & hinges
- Interchange the opposite walls!
- Moisture resistant door and windows
- Reliable floor bearers
- Hardware kit included
- Pure glass - no cheap plastic
- Direct from the factory
- Polite & Convenient delivery
- Made while protecting the forests

**£3,459.00**

**The price includes:**

double glazing, delivery, offloading, hardware kit & VAT.

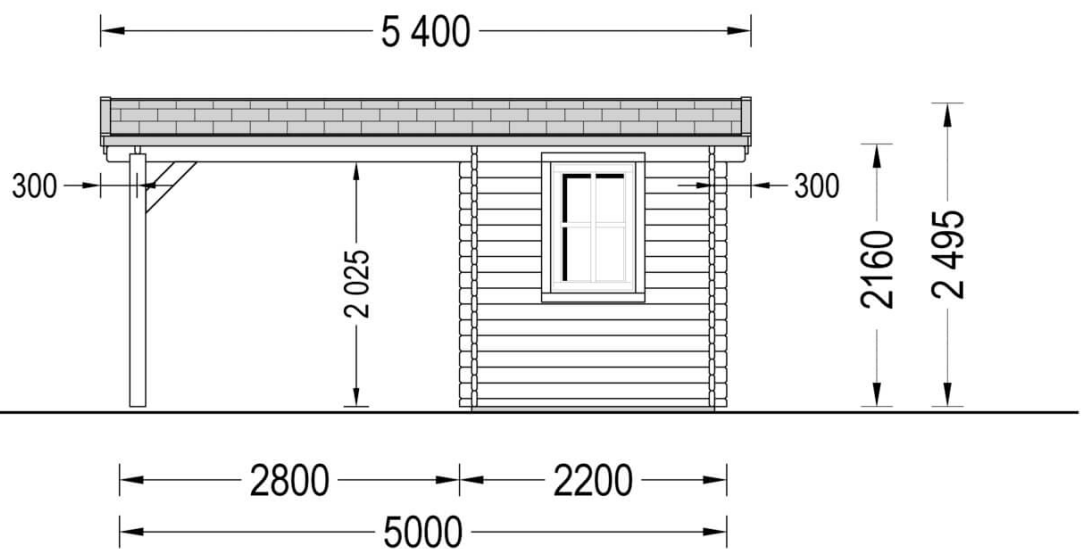
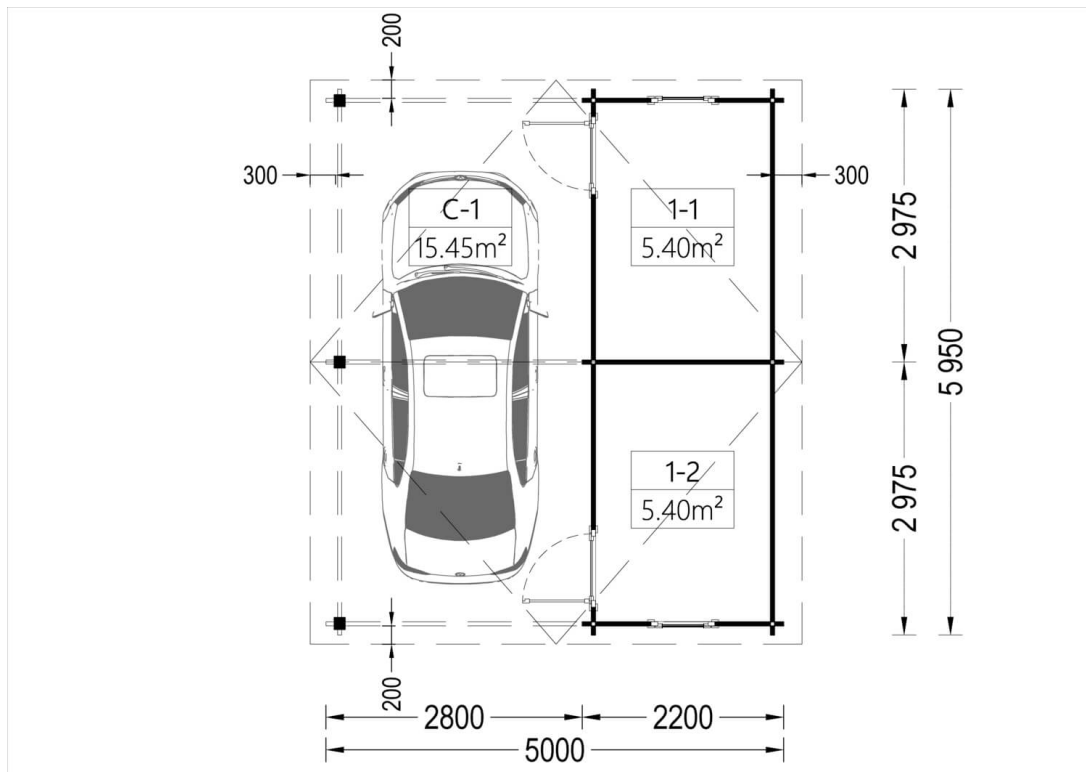
*Visit our website to make sure this is the current price:*

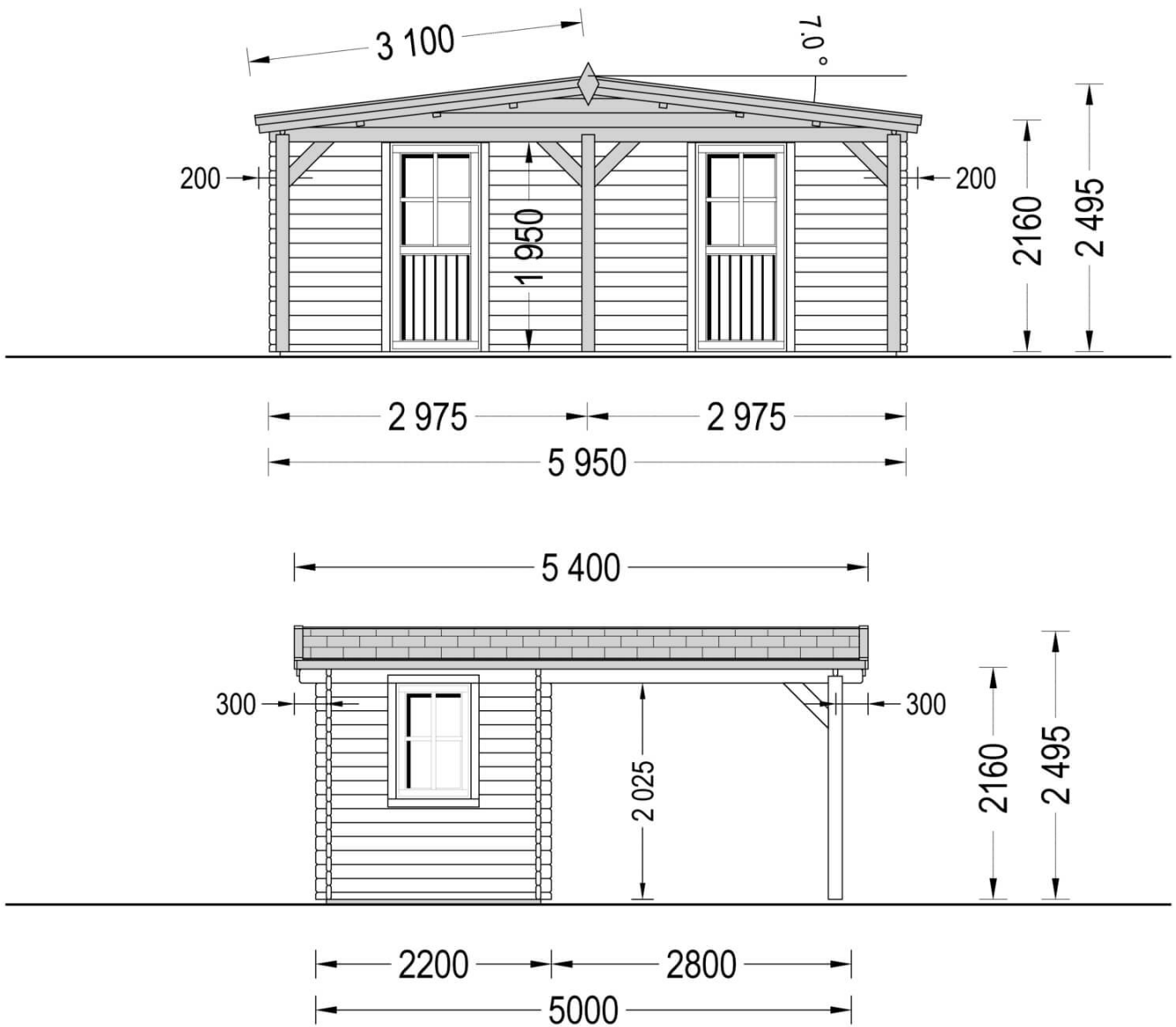
[www.quick-garden.co.uk/av038-8/](http://www.quick-garden.co.uk/av038-8/)

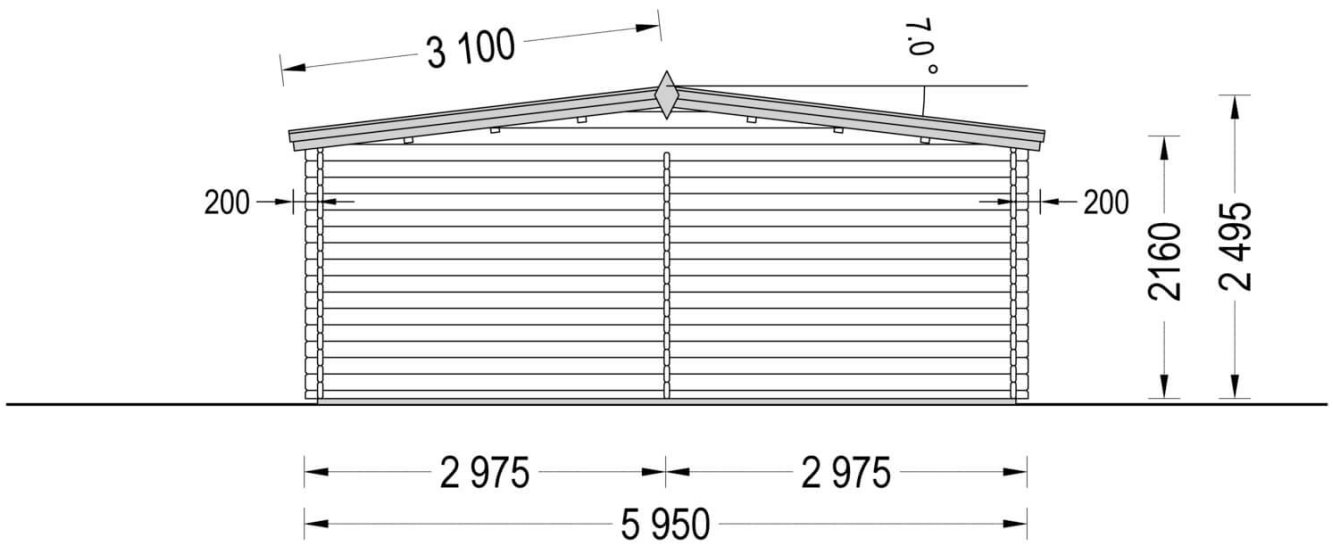


**Finance available. Contact us!**

## Specifications & detailed sketches







## Product specifications

Material	Natural certified Nordic pine/ Scandinavian spruce
External dimensions (width x depth)	500cm x 595cm
Internal dimensions (width x depth)	280cm x 595cm + shed 220cm x 595cm
Wall	44mm
Eaves height	216cm
Ridge height	249 cm
Roof Material	19 - 20mm thick tongue & groove boards
Floor Material	19 - 20mm thick tongue & groove boards
Roof overhang	30cm (1'3")
Number of rooms	2
Door (width x height)	85cm x 192cm (2 units)
Windows (width x height)	70cm x 101cm
Roof Covering Material	Optional
Anti Rot Warranty	10 Year

## Select product features according to your needs

Bitumen roofing shingles	Green Shingles	+£560.00
	Red Shingles	+£560.00
	Black Shingles	+£560.00
Roof Covering Material	Firestone® EPDM	+£699.00
Metal roofing	Black	+£1,079.00
	Green	+£1,079.00
	Red	+£1,079.00
PVC guttering (£359.00 payable on completion)	Available with installation service only	+£0.00
Installation service (£1099.00 payable on completion)	Payable on completion	+£0.00
Clear water-based primer for interior RP Wood® (supplied RP Wood® clear in tins)	treatment	+£139.00

Call us **02070 994 301** Mon-Fri: 8am-5pm  
[clients@quick-garden.co.uk](mailto:clients@quick-garden.co.uk) • [www.quick-garden.co.uk](http://www.quick-garden.co.uk)

## Customer Service

### Free delivery \*

Mainland England and Wales

4 - 8 working days for products in stock

4 - 8 weeks for products not in stock or custom-made products

Mainland Scotland

8 - 15 working days for products in stock

4 - 8 weeks for products not in stock or custom-made products

\* An extra charge for deliveries to mainland Scotland applies only for items which are priced under £3000. In such cases you will find these charges on each product page. For all items whose price is over £3000, delivery to mainland Scotland is free of charge.

---

### Payment

We accept card and bank payments.

To submit your order, you can either choose to pay a deposit of 20% of the total price or to pay the whole price in one go.

---

### Planning permission

Contact us for any advice you may need regarding basic planning permission or building regulation matters. We will always be happy to help you.

---

### 10 yrs. warranty

All garden buildings with a wall thickness of at least 34mm come with a 10-year anti-rot guarantee. Structures with 28mm wall thickness come with a corresponding 5-year anti-rot guarantee.